



TCM CORPORATION PLC.

Corporate Brochure

About TCM

TCM Corporation Plc., formerly Thailand Carpet Manufacturing Plc, was established in 1967 by Srivikorn Group as the first carpet manufacturer in Thailand. The company was built on 13 acres of land near the Don Muang airport, selling carpets under the brand name "Tai Ping" domestically.

Today, the company is highly regarded as one of the leaders of hand tufted and Axminster carpet sold worldwide under the brand "Royal Thai". In addition, we have also expanded and grown into a true multinational corporation that services many industries. Our businesses include TCM Flooring, TCM Living and TCM Automotive.

Our commitment to social responsibility extends beyond providing products that are safe, comfortable, and well designed. It extends to fostering humane, safe, and ethical workplace conditions in every facet of our multinational business, while promoting those same values – and a greater commitment to social awareness – wherever our brands are present.

Global Presence • Aesthetic Excellence • Business Integrity

TCM logo was created and inspired by the world's highest flying bird, Rüppell's griffon vulture. It is to portray the company with a mission to fly high and grow prosperous.

Our Businesses



Our extensive range of products and reliable service make us the quintessential one-stop source for high-quality, sustainably produced carpets. We offer 2 distinguished brands, which are **Royal Thai** for hospitality and residential sectors, and **Carpets Inter** for the corporate sector.



We manufacture and distribute UK's leading furniture brands including **Alstons**, and **DM Midlands** which includes; **Ashley Manor**, **AMX Design**, and **Alexander & James**, based in the United Kingdom and Thailand.



Producing carpets and upholstery fabrics for leading automotive brands around the world. We have 2 manufacturing facilities located within our **Carpets Inter** facility and another one at **T.C.H. Suminoe**.

Our Brand Portfolio

Royal Thai

We are a producer of floor coverings for hotels, cruise ships, casinos, convention centres, airports, and a vast range of hospitality spaces around the world, with a technical expertise that enables us to realize exceptional craftsmanship on a grand scale.

Carpets Inter

Our extensive range of products and reliable service make us the quintessential one-stop source for high-quality, sustainably produced carpets for the corporate sector including offices and commercial spaces.

T.C.H. Suminoe

Producing carpets and upholstery fabrics for leading automotive brands around the world. We have 2 manufacturing facilities. One in Carpets Inter factory and another one is T.C.H. Suminoe.

Alstons

Alstons Furniture Group is one of the leading upholstery manufacturers in the UK. Alstons factory located in Colchester, England, covering 3.5 acres of land. The Company has been long established sofa manufacturer with high quality products and top back up services.

Ashley Manor

Based in the heart of England, every piece of furniture is hand crafted, combining traditional time-honoured techniques with modern technology to ensure the highest quality result, delivered in the most efficient way.

AMX design

Initially part of top British furniture manufacturer Ashley Manor, AMX Design became an independent business in 2004. AMX Design has cemented a high reputation for our inspired and individual leather and fabric mix furniture, but we also offer a full leather-only range in a wide variety of types and grades.

Alexander & James

Grounded in a Great British furniture making heritage, Alexander and James is a quintessentially English, boutique sofa company. Collections are hand crafted and made to order from the finest materials, sourced from around the world.





"TCM Corporation PLC, once a national manufacturer, has expanded into a true global conglomerate becoming industry leaders in Flooring, Living and Automotive business sectors while continuing to grow and explore new opportunities."

Our Journey

2017

Acquired Commercial Carpet Business from Tai Ping International Limited, HK, including sales office around the world and production facilities "Carpet International Thailand Plc." in Thailand. TCMC revoked the brand 'Tai Ping' and continue using 'Royal Thai' brand in domestic and worldwide market.



2015

Acquired 76% shares of Alstons furniture group in UK.



2011

Registered Royal Thai International Co., Ltd. as a sole distributor of TCMC's floor covering products in domestic market.



1994

Registered as a 'Public Company Limited'.



1972

Expanded to export market under brand "Royal Thai".



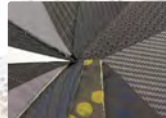
2017

Changed its name to "TCM Corporation Public Company Limited".



2016

Acquired 75% shares of DM Midlands Group in UK, including 4 subsidiaries, those are: Ashley Manor Upholstery Limited, AMX Design Limited, Alexander & James limited, and James Alexander Co., Ltd.



2014

Acquired 49.9% shares of TCH Suminoe Co., Ltd.



2008

Invested in United Carpet Manufacturing Co., Ltd. by holding 51% shares in the company.



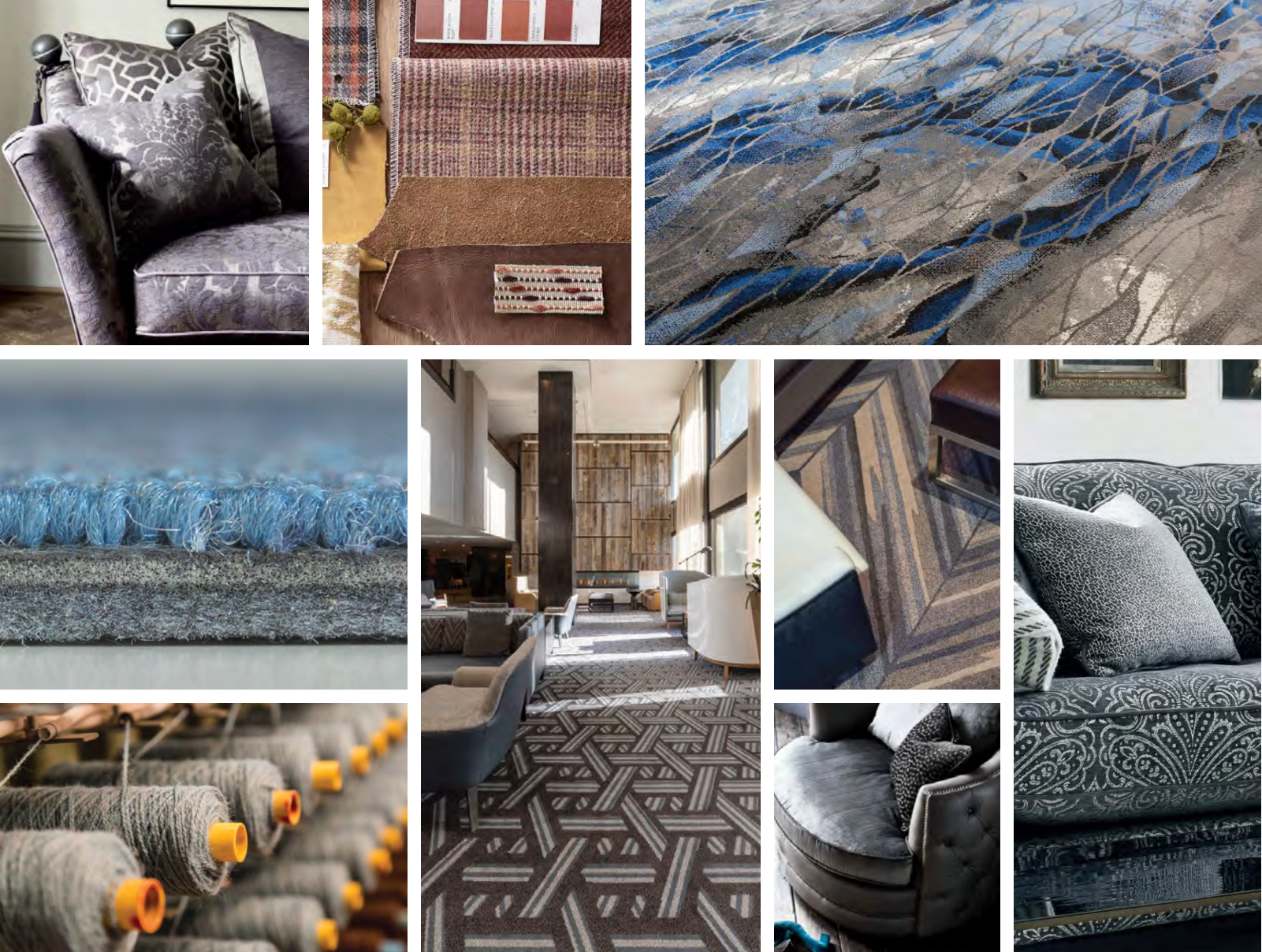
1978

Listed in Stock Exchange of Thailand, trading under code "TCMC".



1967

Established by Srivikorn family, collaborating with Hong Kong Carpet Manufacturers Limited and Philippines Carpet Manufacturing Limited, producing and selling carpets under brand "Tai Ping" domestically.



Quality Comes First

Our products are manufactured using the latest cutting-edge technology and by skilled artisans at our facilities in Thailand and UK. We aim to be leading our industry by providing satisfaction to our customers while improving our efficiency. Our commitment to quality and providing a safe environment for sustainable growth can be seen in our third-party certifications and awards received over the last decade.





238 Vipavadee Rangsit Road, Sanambin, Don Muang, Bangkok 10210
Tel: +66 (0) 2 533 6393 | website: www.tcm-corporation.com | email: info@tcm-corporation.com

